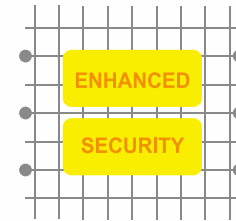


Battens – Wire Guard

ALLEN

GWG ALLEN

Specially developed for installation in commonly accessed areas of condominiums, flats, hostels, garages and car parks. This wire guarded fitting is fitted with tamper-proof screws to address deliberate acts of vandalism. Hence, ensuring general illumination for everyone's safety and convenience.



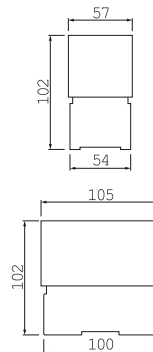
TAMPER-PROOF

SCREWS



Dimension of Fittings

Model	Wattage (Tubes)	Length
GWG 120/91 Allen	1 x 18W	614 mm
GWG 140/91 Allen	1 x 36W	1227mm
GWG 220/91 Allen	2 x 18W	614mm
GWG 240/91 Allen	2 x 36W	1227mm



Rigid Metal Casing

Accessories / Options



Suspension Rods



Heavy-Duty Hinge



Anti Loss Washer



Fully Welded Frame



Tamper-Proof Screw

Key Features